



DIPARTIMENTO DI ARCHITETTURA E DISEGNO INDUSTRIALE
LUIGI VANVITELLI

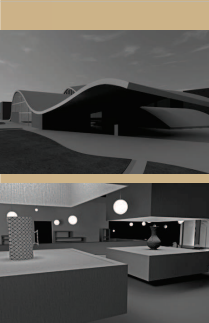
Seconda Università degli Studi di Napoli
Dipartimento di Architettura e Disegno Industriale
Luigi Vanvitelli
Corso di laurea in Architettura - Progettazione degli interni e per l'Autonomia
Insegnamento: A00102 - ARCHITETTURA DEGLI INTERNI
a.a. 2013/2014

GRUPPO

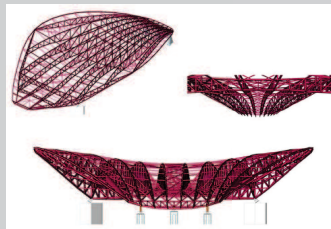
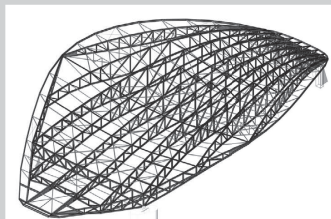


Gianluca Casuccio Iorio Michele

PROGETTO



titolo: DAL GA MUSEUM
DOCENTE: PROF. ARCH. CLAUDIO GAMBARELLA



BEAM CROSS-LINKED

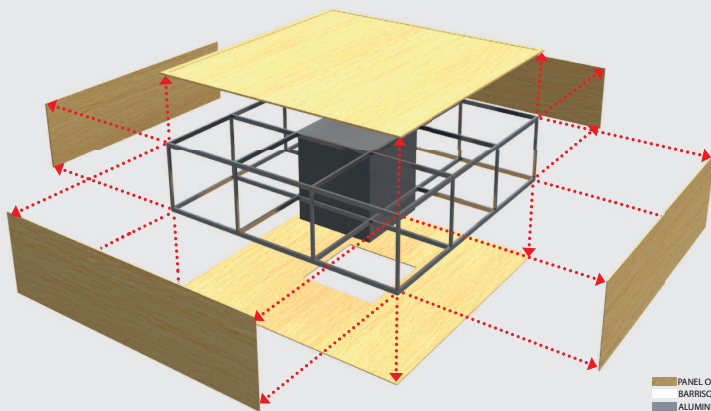
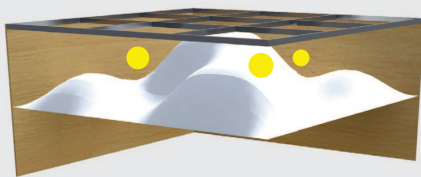
MATERIAL:
Steel



DESCRIPTION:

A truss consists of straight members connected at joints, traditionally termed panel points. Trusses are composed of triangles because of the structural stability of that shape and design. A triangle is the simplest geometric figure that will not change shape when the lengths of the sides are fixed. In comparison, both the angles and the lengths of a four-sided figure must be fixed for it to retain its shape.

LIGHT CUBE

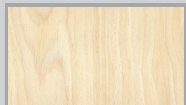


- PANEL OF PLYWOOD VENEER - thickness 10 mm
- BARRISOL - thickness 0,17 mm, 100% recycled
- ALUMINUM - tubular rectangular section 30x50 mm
- IRON BASE
- SPOT LIGHT

PLANKING WOOD

MATERIAL: MAPLE WOOD

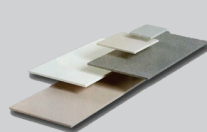
Maple is a hard close-grained wood and belongs to the broad-leaves family. Maple wood has a light colour, pinky yellow, and is full of grains. It's really hard and has solid fiber. Its surface is shiny and smooth. It's mostly used for woodworking (furniture and building), cabinetry, veneer and for musical instruments.



MAPLE WOOD



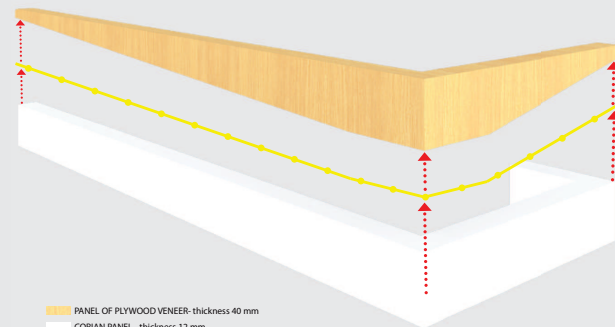
Corian is the brand name for a solid surface material created by DuPont. It is composed of acrylic polymer and alumina trihydrate (ATH). Its primary use is in kitchen countertops, bathroom vanity tops, and wall cladding in showers. Corian is manufactured in three thicknesses: 6 millimetres (0,24 in), 12 millimetres (0,47 in), and 19 millimetres (0,75 in). Cross section cuts show consistent color and particulate patterning evenly distributed throughout the material. Nicks and scratches can be buffed out with a Scotch-Brite pad or orbital sander. In the fabrication process, joints can be made invisible by joining the relevant pieces with Corian's own color-matched two-part acrylic epoxy. The pieces are clamped tightly together in order to express any excess adhesive. After the adhesive dries, the area is sanded and polished to create a seamless joint.



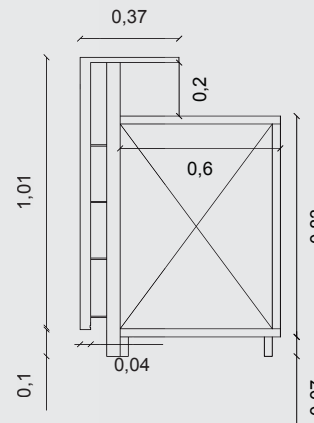
CORIAN

DU PONT
Wilmington, DE
Stati Uniti d'America
www.dupont.com

COUNTER



- PANEL OF PLYWOOD VENEER - thickness 40 mm
- CORIAN PANEL - thickness 12 mm
- STRIP LED - width 10 mm



smarin

MATERIAL: 100% WOOL

LIVINGSTONE

SMARIN
32 avenue Henri Dunant
06100 Nice, France
www.smarin.net

Livingstone colors:

Artemide

CASTORE

FEATURES

Product Name: CASTORE
Color: white
Material: Thermoplastic resin, blown glass

OPTICS

Emittance: Diffuse

BULB

Category: HALO
Number: 2
Lbs: Q812
Watt: E29
Attach: E27
Type: High/Low
Color Rendering: FLECO
Number: 1
Lbs: T-C-F38
Watt: 25
Attach: E27
Class: A

ARTEMIDE SPA
C.so Monforte, 19
20122 Milano (MI)
www.artemide.com

vitra.

PANTOM

VITRA, Italia
Via Torino 16
20060 Lisiate (MI)
www.vitra.com.tr

Dimensions: 600 24", 455 18", 500 19 1/2", 495 19 1/2", 600 36", 400 15 1/2", 400 15 1/2", 400 15 1/2"

Panton colors:

Knoll

SAARINEN TABLE

MATERIALS:
Structure in die-cast aluminum white or black lacquered top in marble or laminate.

KNOLL INTERNATIONAL SPA
Piazza Bertarelli 2
20122 Milano
www.knoll.it

Rimadesio

STRIPE

RIMADESIO SPA
Via A. Furlanelli, 96
20853 Gussano Monza
www.rimadesio.it

Technical aluminum frame galloy EN AW-6060 in brown finishing (powder-coat color: black, silver, cream, black, conforms to UNI EN 12551, UNI 7697 and UNI EN 12551 standards). Built on sliding rail. Panel adjusting height.

ICONE

SPILLO

ICONE
Via Vittorio Veneto, 57
24041 BREMBATE (BG)
www.iconecuce.com

Art.	W	V	Lumen	%Icd	A.ccm	B.ccm	Φ.ccm
SPILLOLET.20	2,64	12	220	3000	20	0,2	6
SPILLOLET.30	3,96	12	330	3000	30	0,2	6