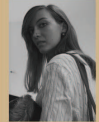
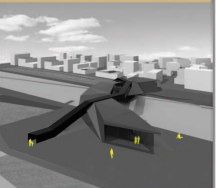




Contestabile_Marinella Fimmano_Daria



Gniero_Luca
PROGETTO



BAGE LAB_MUSEUM

DOCENTE: PROF. ARCH. CLAUDIO
GAMBARELLA



guzzini

REFLEX EASY
Recessed fixed round luminaire designed to use a LED lamp.
Reflector vacuum-metalised with aluminium vapours with an anti-scratch protective layer.
d: 144 mm
H: 111 mm



luceplan

E10010
A built-in system providing soft lighting.
Painted extruded aluminium body.
Dimensions
l: 1209 mm
h: 116 mm



Vitra Amoeba Lounge Chair



MATERIALS
Backrest: laminated frame
Upholstery: foam
Dimensions:
62x86x82 cm

Vitra Amoeba Highback Lounge Chair



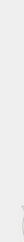
MATERIALS
Backrest: laminated frame
Upholstery: foam
Dimensions:
62x88x127.3 cm

Vitra Wiggle Stool



MATERIALS
Seat surface and body: corrugated card-board
Edges: hardboard

Dimensions:
40x43x40.6 cm



fixing system_pots

1:20