



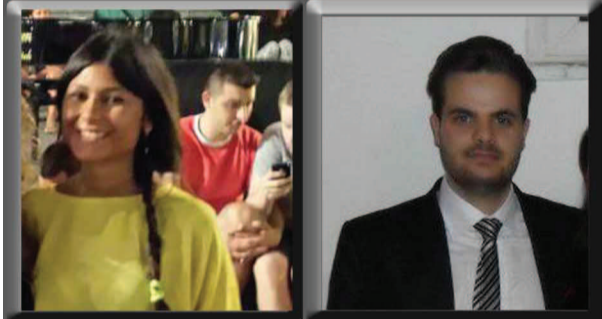
# BRIDGE MUSEUM

DESIGNING A CORPORATE MUSEUM

DIPARTIMENTO DI ARCHITETTURA  
E DISEGNO INDUSTRIALE  
LUIGI VANVITELLI

Seconda Università degli Studi di Napoli  
Dipartimento di Architettura e Disegno Industriale Luigi Vanvitelli  
Corso di laurea in Architettura -  
Progettazione degli Interni e per  
l'Autonomia  
Insegnamento: A9618 - INTERNO  
ARCHITETTONICO  
a.a. 2013/2014

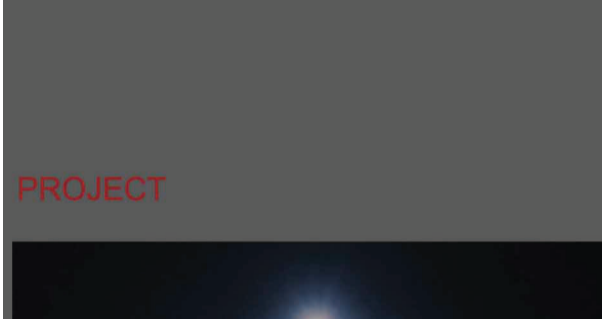
### TEAM



Anna Maria Liccardi



Biagio Caramanna

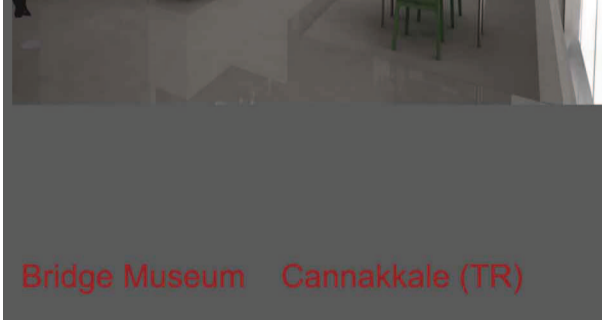


Francesco Tammaro



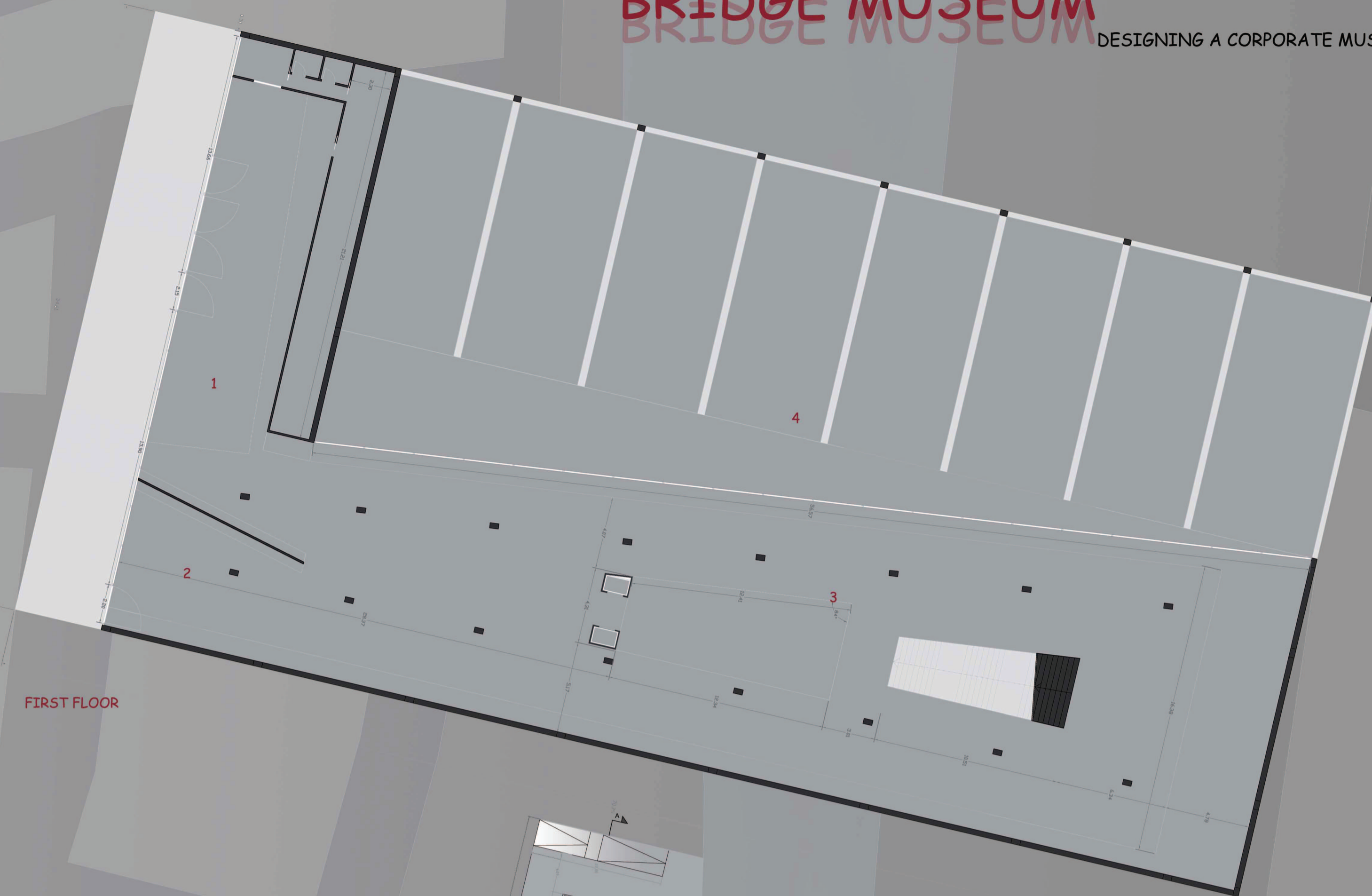
Stanislao Cantaleo

### PROJECT

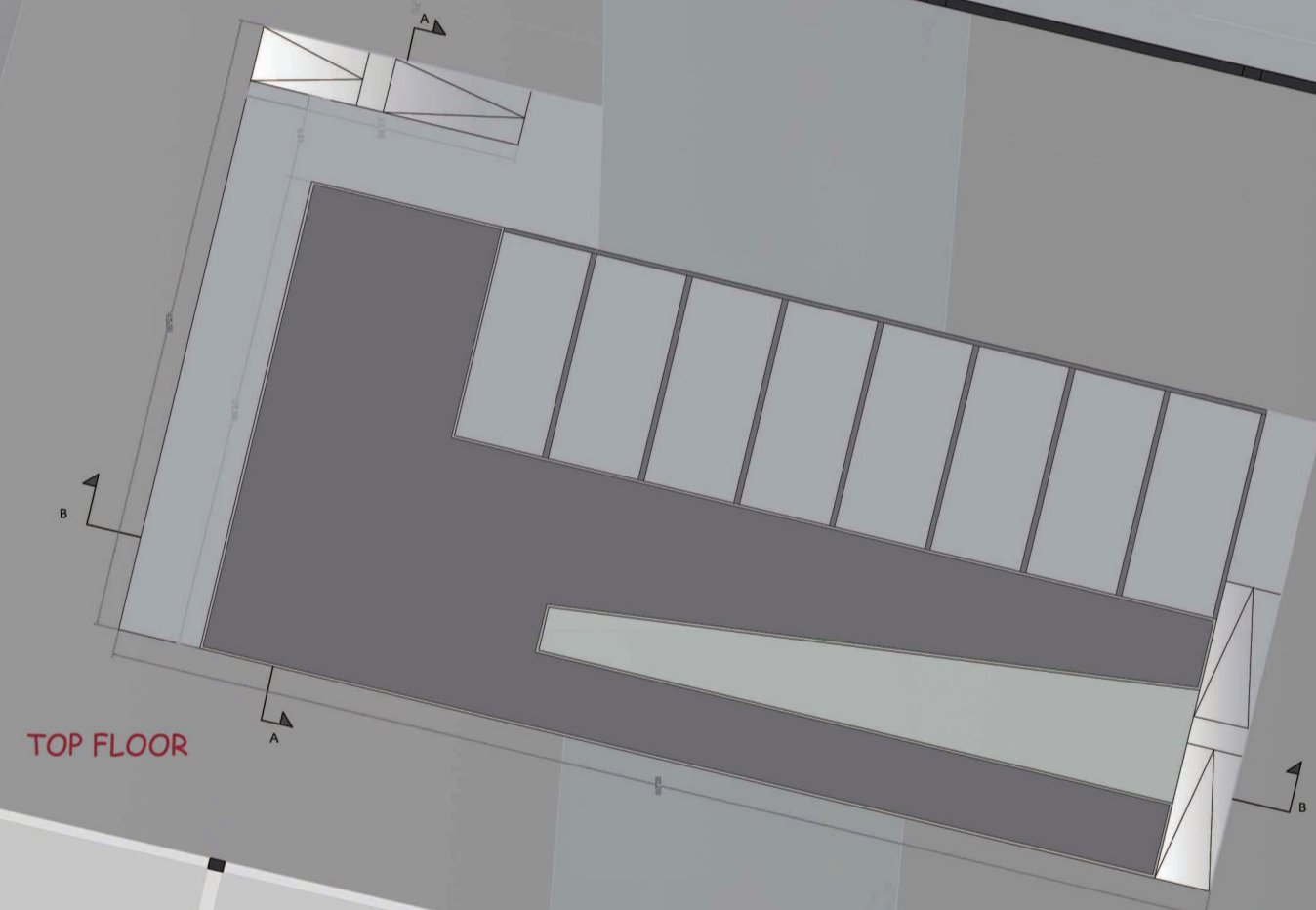


Bridge Museum - Cannakkale (TR)

DOCENTE: PROF. ARCH.  
CLAUDIO GAMBARELLA



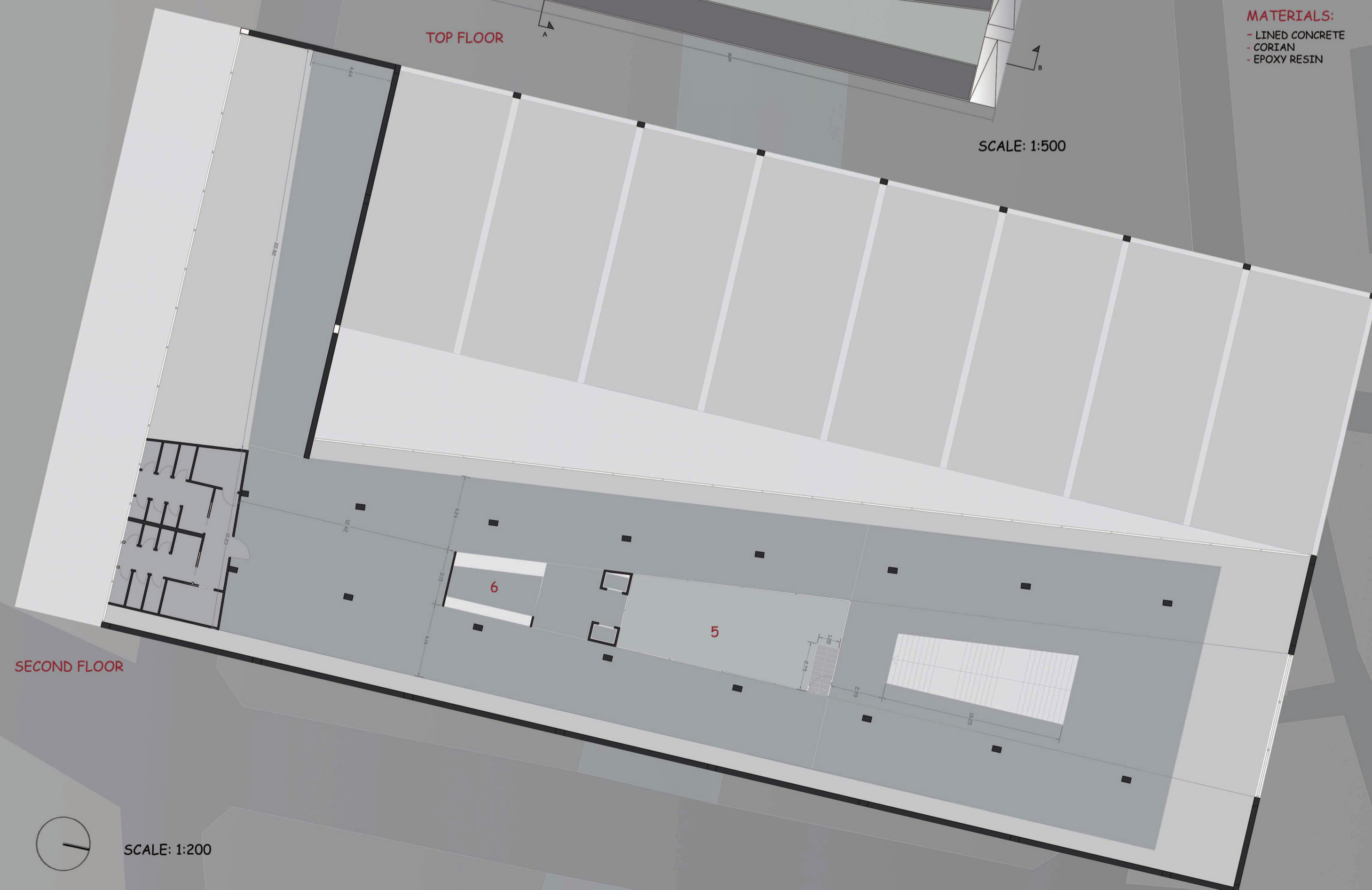
FIRST FLOOR



TOP FLOOR

SCALE: 1:500

- LEGEND:**
- 1-HALL
  - 2-BOOKSHOP
  - 3-EXHIBITION HALL
  - 4-PATIO
  - 5-MEETING ROOM
  - 6-BAR
- MATERIALS:**
- LINED CONCRETE
  - CORIAN
  - EPOXY RESIN



SECOND FLOOR

SCALE: 1:200

TAV.3

