

GRUPPO



Gilberto Stelaris
A00116



Rozzolino Silvia
A0028



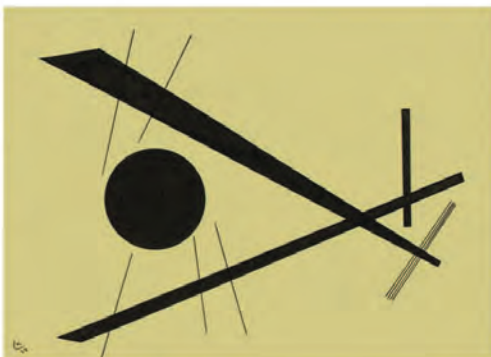
Zorlino Maria Libera
A0066

PROGETTO

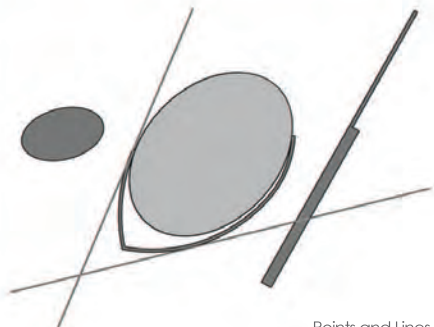


Point Line Plane

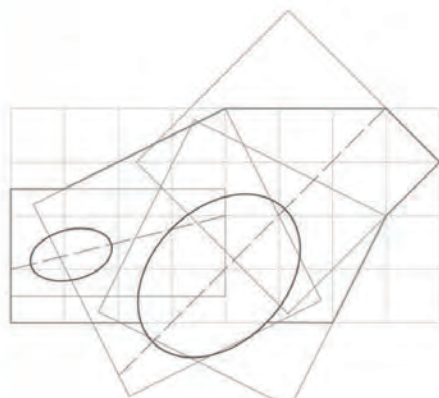
DOCENTE: PROF. ARCH. CLAUDIO GAMBARELLA



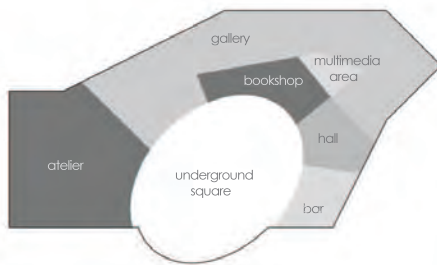
W.Kandinsky, *Mit punkt an der Grenze der Fläche*, 1924



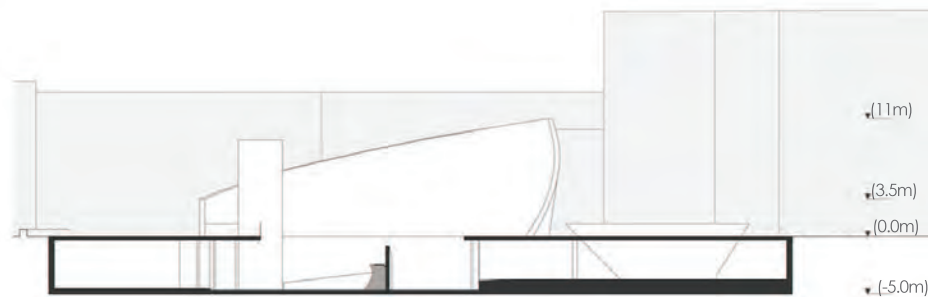
Points and Lines



Points, Lines and Planes

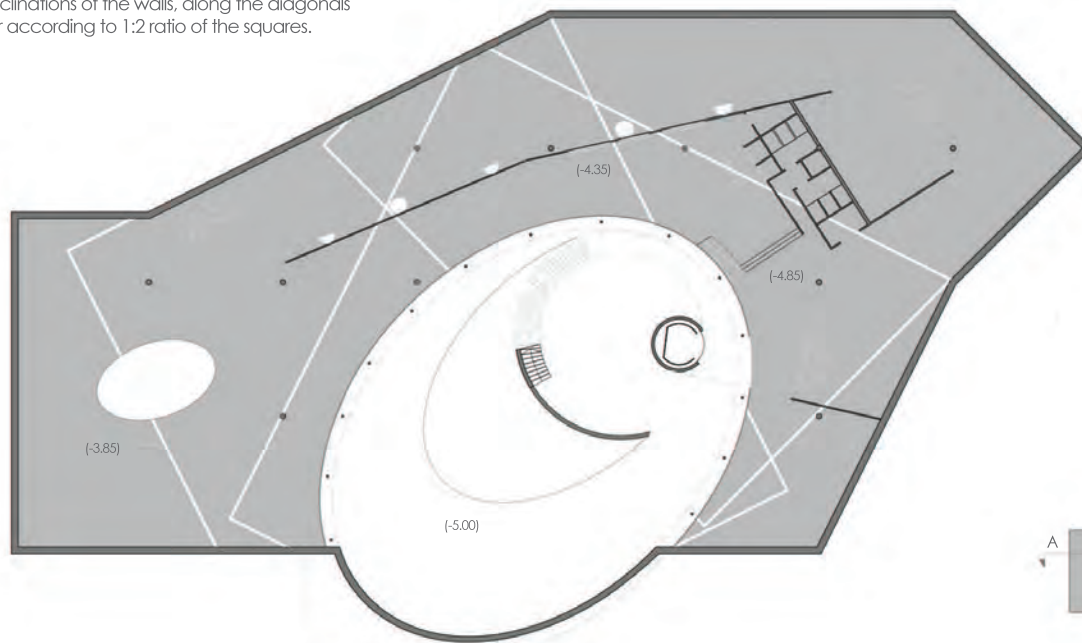


Function Scheme

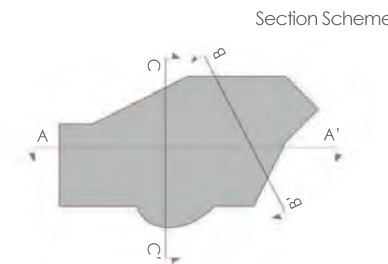


section A-A'

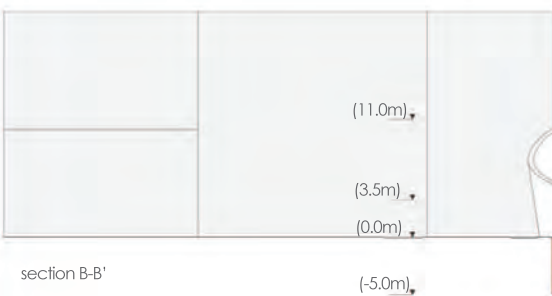
Chosen the model, we didn't do anything but rely on its form to create our museum. The various circular and elliptical forms, the large descendent spiral, the different lines, they recall a composition of point-line-plane that bring us back to the famous paintings of Kandinsky. At first glance, the plant gives confusion, but the entire structure is enclosed in a strict grid of squares 10m x 10m, which is also the main frame of the building, where the bearing elements are placed. Working on this grid, we thought about the inclinations of the walls, along the diagonals or according to 1:2 ratio of the squares.



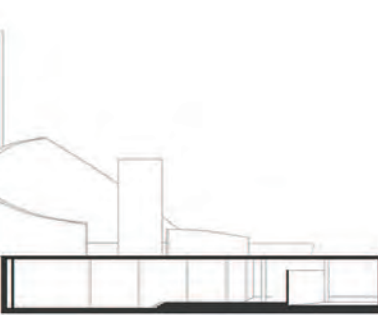
Plan 1:200



Section Scheme



section B-B'



section C-C'



MATERIALS

FLOOR

epoxy resin

WALL

concrete

corian "Du Pont"

- *Designer White*
 - *Beryl Blue*