



DIPARTIMENTO DI ARCHITETTURA
E DISEGNO INDUSTRIALE
Luigi Vanvitelli

Seconda Università degli Studi di Napoli
Architecture and Industrial Department
Luigi Vanvitelli

Master Course: Architecture - Interior
Design and for Autonomy

Learning: A8704 - INTERIOR DESIGN
s.a. 2013/2014

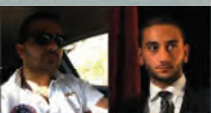
TEAM



SALVATORE CORBELLI



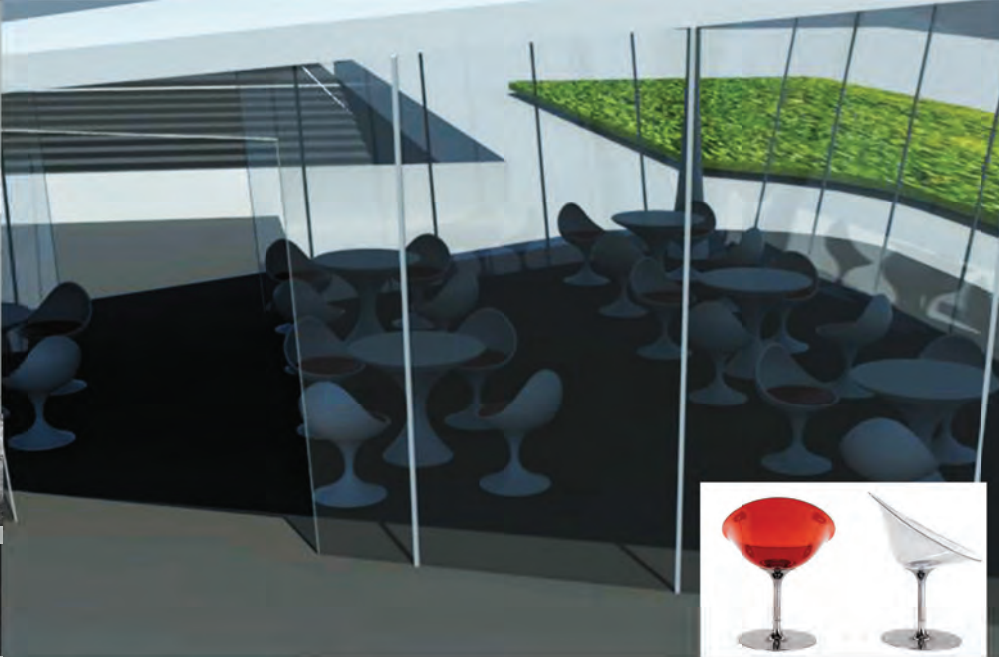
CIRO GIANGO



FRANCESCO VACCÀ

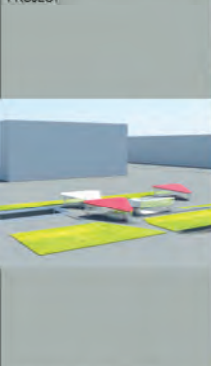


GIUSEPPE GRAZIANO

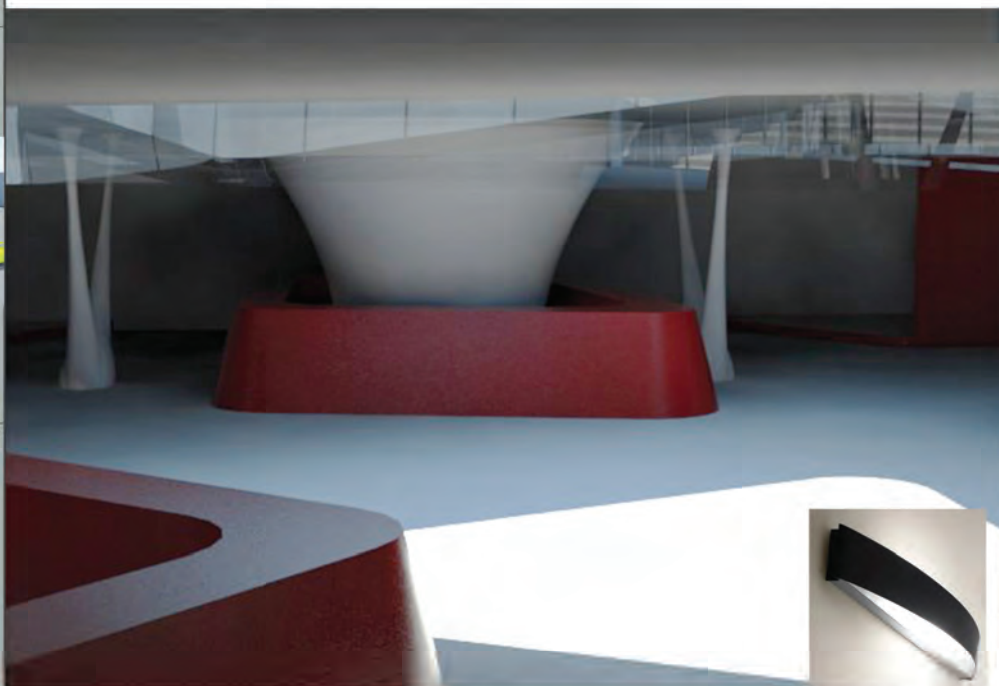


EROS \ Kartell Eros is a swivel armchair with an organic form, characterized by a refined combination of finishes and an adept use of materials and color, a combination of lightness, elegance and comfort, color and transparency. Suitable for both the home and the office as a representative chair in the meeting room or in waiting areas.

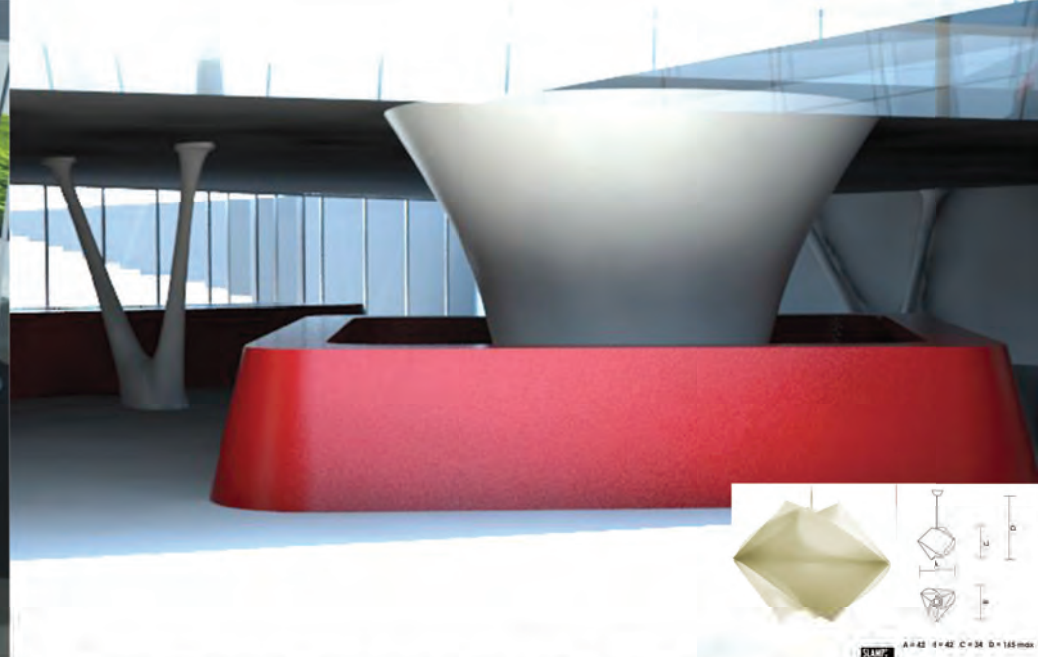
PROJECT



Underground Square Museum
PROFESSOR: PROF. ARCH. CLAUDIO
GAMBARDELLA



Sikrea - Collection UNIQUE \ LUCEPLAN chromed metal body, upper and lower diffusers in satin white glass. Sikrea through his objects, he wants to produce a light that is integrated with equilibrium in the environment in which we live, that you become part of complementary and not intrusive but to be able to arouse the feelings and emotions necessary to perfect harmony with what surrounds us.



Slamp Gemmy \ LUCEPLAN lamp with mounting base and diffuser made of Opalflex[®], coloring gold. The Opalflex is an exclusive patented and recyclable material obtained through a mixture of polymers and glass crystals. This process gives the brightness of the glass creations Slamp, guaranteeing at the same time shatter-proof and versatility. The gradations of color, obtained by screen printing, make lamps luminous presences which create a unique atmosphere.



Luceplan C-Spot \ LUCEPLAN
Lampada a sospensione. Leggera e funzionale, la sua luce è diffusa da un cono in policarbonato bianco ad alta resistenza termica. Sospesa mediante un cavo con guaina trasparente, è una lampada che, nella sua semplicità, consente di dare vita a sobrie coreografie di punti luce. Realizzata in policarbonato con supporti in acciaio inox, regala all'ambiente in cui viene inserita vivacità e leggerezza. Si colora grazie a un riflettore intercambiabile inserito nel diffusore.